

QL-1060N

Professional Label Printer

UP TO
102mm
WIDE LABELS

300 DPI
HIGH RESOLUTION PRINTING

PRINT SPEED
110mm
PER SECOND

UP TO
69 Labels
PER MINUTE*
* Standard Address Labels



3
YEAR
WARRANTY
QL Label Printers

Brother
QL-1060N



SPECIAL TODAY

DK LABEL **DK TAPE**



Always at your side

OPTIONAL LABEL AND TAPE SUPPLIES

- DK LABEL DIE-CUT PAPER LABELS**
- Standard Address Labels DK-11201 400/roll 29mm x 90mm
 - Large Shipping Labels DK-11241 200/roll 102mm x 152mm
 - CD/DVD Labels (Film) DK-11207 100/roll 58mm x 58mm
 - Large Address Labels DK-11208 400/roll 38mm x 90mm
 - Multi-Purpose/Return Labels DK-11204 400/roll 17mm x 54mm
 - Round Labels (24mm diameter) DK-11218 1000/roll
 - Small Address Labels DK-11209 800/roll 29mm x 62mm
 - Large Multi-Purpose Labels DK-11240 600/roll 102mm x 51mm
 - Round Labels (12mm diameter) DK-11219 1200/roll
 - Shipping / Name Badge Labels DK-11202 300/roll 62mm x 100mm
 - File Folder Labels DK-11203 300/roll 17mm x 87mm

- DK TAPE CONTINUOUS LENGTH TAPES**
- Durable Film Tapes**
- Medium Width Tape DK-22211 Black Print on White 29mm x 15.24M
 - Wide Tape DK-22212 Black Print on White 62mm x 15.24M
 - Wide Tape DK-22606 Black Print on Yellow 62mm x 15.24M
 - Wide Tape DK-22113 Black Print on Clear 62mm x 15.24M
- Durable White Paper Tapes**
- Narrow Width Tape DK-22214 12mm x 30.48M
 - Medium Width Tape DK-22210 29mm x 30.48M
 - Wide Tape DK-22205 62mm x 30.48M
 - Extra Wide Tape DK-22243 102mm x 30.48M
- Removable Adhesive Paper Tapes**
- Wide Tape DK-44205 Black Print on White 62mm x 30.48M
 - Wide Tape DK-44605 Black Print on Yellow 62mm x 30.48M

Contact:

brother®
at your side

Brother International (Aust) Pty Ltd
Corporate Web-site: www.brother.com.au Label Printer Web-site: www.brotherlabelprinters.com.au
NSW/ACT: Bldg A 11 Talavera Rd. Macquarie Park NSW 2113 Ph: (02) 9887 4344 Fax: (02) 9870 7234
VIC: 1/733 Whitehorse Rd. Mont Albert VIC 3127 Phone: (03) 9899 4844 Fax: (03) 9899 4833
QLD/NT: 245 Riverside Drive. West End QLD 4101 Phone: (07) 3255 1211 Fax: (07) 3255 1911
SA/TAS: Unit 4, 13 King William Rd. Unley SA 5061 Phone: (08) 8272 1300 Fax: (08) 8272 1199
WA: 117 Great Eastern Highway. Belmont WA 6104 Phone: (08) 9478 1955 Fax: (08) 9277 2177
All specifications subject to change without notice

DK LABEL Die-Cut Paper Labels

Brother International GmbH
Im Rosengarten 14
61118 Bad Vilbel

Large Multi-purpose Label
DK-11240 | 600 labels/roll
51x102mm

Large Shipping Label
DK-11241 | 200 labels/roll
102mm x 152mm

DK-11202 | 300 labels/roll
62mm x 100mm

DK-11201 | 400 labels/roll
29mm x 90mm

DK-11209 | 800 labels/roll
29mm x 62mm

DK-11203 | 300 labels/roll
17mm x 87mm

DK-11219 | 1,200 labels/roll
12mm x 12mm

DK-11204 | 400 labels/roll
17mm x 54mm

DK-11218 | 1,000 labels/roll
24mm x 24mm

DK-11208 | 400 labels/roll
38mm x 90mm

DK-11207 | 100 labels/roll
58mm x 58mm **Film**

NO SMOKING

Continuous Length Paper Tape

White Tape DK-22214 12mm x 30.48m
White Tape DK-22210 29mm x 30.48m
White Tape DK-22205 62mm x 30.48m
White Tape DK-22243 102mm x 30.48m
White Tape DK-44205 Removable Adhesive (62mm x 30.48m)
Yellow Tape DK-44605 Removable Adhesive (62mm x 30.48m)

DANGER!

Continuous Length Film

White tape DK-22212 62mm x 15.24m
Yellow tape DK-22606 62mm x 15.24m
Clear tape DK-22113 62mm x 15.24m
White tape DK-22211 29mm x 15.24m

DK TAPE

NO SMOKING

Continuous Length Paper Tape

White Tape DK-22214 12mm x 30.48m
White Tape DK-22210 29mm x 30.48m
White Tape DK-22205 62mm x 30.48m
White Tape DK-22243 102mm x 30.48m
White Tape DK-44205 Removable Adhesive (62mm x 30.48m)
Yellow Tape DK-44605 Removable Adhesive (62mm x 30.48m)

DANGER!

Continuous Length Film

White tape DK-22212 62mm x 15.24m
Yellow tape DK-22606 62mm x 15.24m
Clear tape DK-22113 62mm x 15.24m
White tape DK-22211 29mm x 15.24m

CONTENTS

- ➔ QL-1060N label printer
- ➔ 1 x DK-11241 (40 large shipping labels (102mmx152mm))
- ➔ 1 x DK-22205 (8m continuous paper tape roll (62mm x 8m))
- ➔ Label catch tray • USB cable • AC power cord
- ➔ CD-ROM (Software/Driver/User Guide) • Quick start guide
- ➔ Label supplies guide

Wide range of labels to choose from.
Easy to load label rolls.

Technical Information

Hardware	
Print Method	Direct Thermal
Maximum Label Width	102mm (4")
Maximum Print Height	98.6 mm
Maximum Label Length	3 metres (Windows) / 1 metre (non-Windows)
Print Resolution	300 dpi / 1296 dots
Maximum Print Speed	110 mm / sec 69 labels/minute*
Number of Printing	1-9999(USB), 1-99 (Serial)
Cover Open Sensor	Yes
Roll Size Detection	Yes
Interfaces	USB, Serial(RS-232C), 10/100 BASE-TX Wired Ethernet.
Dimensions	170mm(W) x 220mm(D) x 147.5mm(H)
Weight	1.7kg (without DK roll)
Power	Internal Switched Power Supply
Colour	Black
Feed Button	Yes
Print Head MTBF**	30km / 1300 die-cut rolls
Cutter MTBF**	150,000 cuts (continuous rolls), 300,000 cuts (die-cut rolls)
Contents	QL-1060N label printer, (40 large shipping labels (102mmx152mm) - DK11241 (8m continuous paper tape roll (62mm x 8m)- DK22205 , Label catch tray, USB cable, AC power cord, CD-ROM (Software/Driver/User Guide), Quick start guide

Software

Software Add-Ins Software	Microsoft® Word® / Outlook® / Excel® (Windows® Only) P-touch® Editor 5.0 for Windows®, P-touch® Editor 5.0 for Mac OS® P-touch® Address Book 1.1 for Windows®
Template Transfer	Yes

Built-In Firmware

Command Types	Raster, ESC/P, Label Template
Built in Fonts	Bit-map fonts: Helsinki, Brussels, Letter Gothic Bold, San Diego, Brougham Outline fonts: Helsinki, Brussels, Letter Gothic Bit-map fonts: 24dots, 32dots, 48dots, 48dots, Outline fonts: 33 - 400dots (22sizes)
Character Size	Bold, Outline, Solid, Shadow, Italic, Vertical
Font Style	Software side: CODE39, CODE128, UCC/EAN-128(GS1-128), ITF(I-2/5), CODABAR (NW-7), UPC-A, UPC-E, EAN13(JAN13), EAN8, ISBN-2(EAN13 AddOn2), ISBN-5 (EAN13 AddOn5), POSTNET, Laser Bar Code, RSS Symbol(RSS14 Standard, Truncated, Stacked, Stacked Omni, RSS Limited, RSS Expanded, RSS Expanded Stacked), PDF417(Standard, Truncate, Micro), QR Code(Model 1, Model 2, Micro), Data Matrix (ECC200 Square, ECC200 Rectangular), MaxiCode(Model2, Model3, Model4, Model5)
Barcodes	Machine side: CODE39, CODE128, UCC/EAN-128(GS1-128), ITF(I-2/5), CODABAR (NW-7), UPC-A, UPC-E, EAN13(JAN13), EAN8, RSS Symbol(RSS14, RSS-Limited, RSS Expanded), QR CODE (model 1, model 2, micro QR), PDF417 (Standard, Truncate, Micro PDF 417), Data Matrix (ECC200 Square, ECC200 Rectangular), MaxiCode

Direct Connection & ESC/P Template Support

Max Templates	99
Max Lines/Template	1,000
Character code set	Windows 1252 Western Europe, Windows 1250 Eastern Europe, Standard character code
Changeable Data	Text, Barcode
Object Rotation	Yes
Multiple line support	Yes
Horizontal text align	Yes
Text layout formatting	Shrink to Fit, Clip text, Long text, Automatic length, Free size
Cutter options	Auto cut (Including cut at any number of labels) Cut at end

System Requirements

Operating System	Windows 2000 Pro / XP / Windows Vista® / Windows Server® 2003 Mac OS X 10.3.9 - 10.4.10
Hard Disk Free Space Interface	Windows®: Over 70MB / Mac OS®: Over 100MB Windows®: USB 1.1 or later, RS-232 9 pin D-Sub, 10/100 BASE-TX Wired Ethernet Mac®: USB 1.1 or later, 10/100 BASE-TX Wired Ethernet

*At 300x300 dpi using 4 line address label, text only.
**Based on internal Brother testing when using die-cut labels.

The Brother QL-1060N Professional Label Printer is the perfect synergy of performance and functionality.

Introducing the powerful and versatile Brother QL-1060N Professional Label Printer. Perfect for creating cost effective large shipping labels on demand. It's also designed to quickly produce labels for envelopes, file folders, CD/DVD, name badges and more! ... Once you use the Brother QL-1060N Label Printer you will discover many more uses for this versatile product. The Brother QL-1060N Label Printer is for those wanting to create a variety of customized labels with barcodes and graphics - to meet the deadline pressures they face everyday.

Perfect for shipping and receiving departments, healthcare industry, lab slide labeling and retail shelf and product labels.

BROTHER QL-1060N 102mm WIDE BUILT-IN NETWORK LABEL PRINTER FEATURES

Robust commercial-grade label printer with built-in ethernet to make it easy to connect and manage over the network.



FAST PRINT SPEED

The Brother QL-1060N Label Printer can print up to 102mm per second / up to 69 labels* per minute.

HIGH QUALITY PRINTING

Professional high-resolution printing (up to 300 dpi) captures all the fine details of pictures, logos and graphics.

* Based on internal Brother testing when using die-cut labels.

EASY TO INSTALL

Brother QL-1060N Label Printer comes with easy to install label creation software and drivers. Simply place the CD into your PC and follow the user prompts. When requested, connect the Brother QL-1060N Label Printer to your PC via the included USB or RS232 cable. It's that easy!

ACCEPTS UP TO 102mm WIDE LABELS

The Brother QL-1060N Label Printer prints on labels up to 102mm wide. This provides flexibility, with a wide range of label and tape rolls to choose from. Print on labels as small as 12mm diameter round labels or as large as our 102 x 152mm shipping labels.

†† Comes with starter rolls of DK-11241 - 102mm x 152mm Large Shipping Labels (40 labels) DK-22205 8m Continuous Paper Tape roll (62mm x 8m)

USER-FRIENDLY CONTROL PANEL

Easy access control panel button with 3 color LED status display.

PRINTS HIGH-RESOLUTION TEXT AND GRAPHICS

Print up to 300 x 300 dpi resolution.

ROBUST DESIGN

Makes it suitable for most work environments.

USB AND RS232 CONNECTION

Connect to your computer via the included USB cord or a RS232 cord.

ETHERNET INTERFACE

Allows for multiple users to connect and use the QL-1060N label printer.

BARCODE PRINTING

Easy to include barcodes in label design. Wide variety of barcodes available in the software.

WHY NETWORK A LABEL PRINTER?

A network label printer allows for multiple users to be connected and use one machine. All users on the LAN network - whether they are PC or Mac users - can access the networked Brother QL-1060N label printer. The advantages of this include:

- Low initial purchase cost
- Saves space
- Easy to install and manage
- Ability to print remotely from another location
- Print different sized labels with out having to change rolls - this is possible if there is a series of label printers connected to the network and each machine holds a different roll type

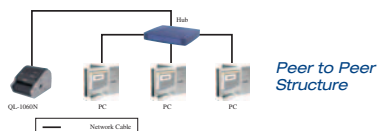
EASY TO INSTALL

Installing the Brother Label Printer onto the Network:

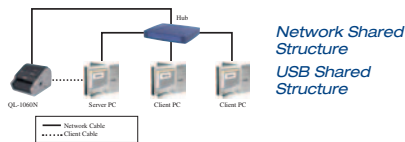
It is simple to install the Brother QL-1060N onto a network using the user-driven installation software.

Network Structures

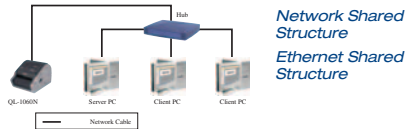
The Brother Label Printer can be connected to network via a peer to peer structure or using a Network Shared Structure (USB or Ethernet model).



Peer to Peer Structure



Network Shared Structure USB Shared Structure



Network Shared Structure Ethernet Shared Structure

Machine photos are for illustrative purposes

EASY TO MANAGE

The Network management tool provides a range of tools to make it easier to manage the Brother QL-1060N label printer. The tools include:

Printer Status Monitor

The Brother QL-1060N offers network monitors for easy management of label printers on the network.

Error Checking

- Local USB connection - an error message appears immediately on-screen to identify the error that has occurred.
- Network connection - The 3 color LED flashes red to indicate an error has occurred and is then followed shortly after with an error message.

BRAdmin Network Management Software BRAdmin Light (Available on Included CD)

The BRAdmin Light is a utility used in the initial set up of Brother Network connected devices. It allows the user to search for printers, view printer status and configure basic network settings. BRAdmin Light allows for easy access of vital information on the QL-1060N.

BRAdmin Professional (For Windows)

(Available via FREE download from: <http://solutions.brother.com>) The BRAdmin Professional is a more advanced management of network connected Brother devices. It includes BRAdmin Light functions as well as allowing the Administrator to access multi-printer settings.

Using BRAdmin Professional the Administrator can access the following information:

- Device (Status, Speed, Emulation, Memory, Template and Node Type)
- Printer (Media Status, Media Type, Total Cut Count, Total Print Length, etc)
- Printer Set Up (Emulation, Power, and Baud Rate)
- Operation Controls (User Reset, Factory Reset, Print Setting Lists and Cancel Jobs)

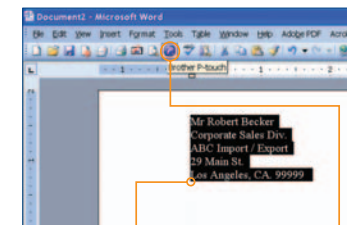
Web BRAdmin

(Available via FREE download from: <http://solutions.brother.com>) Web BRAdmin is the web based utility for the advanced management of network connected Brother devices. It has the same functionality as BRAdmin Professional.

TIP: The Brother QL-1060N uses the same network management interface as our range of inkjet and laser printers, making it easier to integrate the machine into your current system.

USER-FRIENDLY BUT POWERFUL P-TOUCH® EDITOR V.5 LABEL CREATION SOFTWARE

Create labels using information stored in Microsoft® Word®, Excel® and Outlook® (Available for Windows® only)



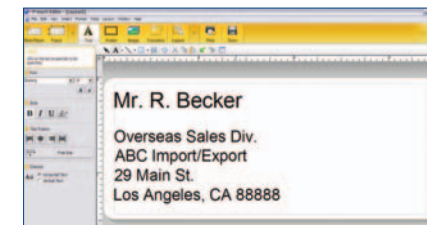
HIGHLIGHT: select the text from your document.

CLICK: on the add-in button on the toolbar to pull the data into the label creation software.

PRINT: your label right away or edit as desired.



Using the included powerful, yet easy to use, label creation software allows you to get creative and design your own label (Express mode shown)



3 INPUT LEVELS IN THE LABEL CREATION SOFTWARE:

(Available for Windows® only)

1. **SNAP FUNCTION:** Allows for screen capture to be easily incorporated in label design with a press of the button.
2. **EXPRESS MODE:** This mode is perfect for the beginner or for creating labels quickly (shown in picture above).
3. **PROFESSIONAL MODE:** Create sophisticated label designs in this mode or for the expert label designer.

POWERFUL SOFTWARE INTEGRATION TOOLS WITH THE b-PAC SOFTWARE DEVELOPMENT KIT

What is b-PAC Software Development Kit

b-PAC is Brother's Application Programming Interface (API) for its P-touch® Editor label design software. b-PAC gives programmers a way to use specific features of the P-touch® Editor software without having to open the application. Using b-PAC, programs can pass text, numbers, graphics, and bar code data to a label template, and print the label directly to any of Brother's Label Printers.

b-PAC offers added versatility in creating label templates

As an alternative to creating a label in their specific application, developers create the label template with P-touch® Editor, and use b-PAC to pass the data to the pre-defined template. Because b-PAC integrates seamlessly with Brother label printers, you'll always know that the labels will print as expected.

Free Download of b-PAC Software Development Kit

b-PAC provides automation components for using P-touch® Editor label templates, and can be used by any application that supports COM Automation. Included with the b-PAC installation are the distribution component and license, complete documentation, and sample code written in Visual Basic, Visual Basic for Applications, Visual Basic Script, and Visual C++. Developers can download any of Brother's bPAC software development kits at: http://www.brother.com.au/BPAC/bPAC_sdk.asp

