



JFS516v2



JFS524v2

The NETGEAR® Fast Ethernet Unmanaged Switches series are purposely designed, well built and rigorously tested for small and medium-sized networks where reliability and performance are the keys while Plug-N-Play connectivity and operational cost savings are the must-haves. With a 1U form factor, they can be placed on the desktop or rack-mounted with the included rack-mount kit for professional installation.

The JFS516 and JFS524 come with 16 and 24 ports 10/100Mbps copper ports respectively. They offer energy efficiency features and are compliant with the IEEE 802.3az standard. Both models are fanless for silent operation, business class rugged, and come with a lifetime warranty*.

Highlights

Instant Network Connectivity for Your Small Business and Home Office

- Non-blocking switching architecture forwards and filters packets at full wire-speed for maximum throughput
- Up to 24 ports, each delivering up to 200Mbps of dedicated network bandwidth to servers, PCs and network devices
- Energy Efficient Ethernet (IEEE802.3az) for optimized power saving
- Rugged metal case and fanless design for reliable and silent operation

Business-Class, Built with Performance and Reliability

- Plug-and-play—begins working as soon as it's powered on
- Auto MDI/MDI-X automatically adjusts for straight-through or crossover cables
- Auto Sensing and IEEE 802.3 Nway Auto Negotiation
- IEEE 802.3x Flow Control
- IEEE 802.1p QoS for traffic prioritization
- Intelligent LEDs for port link status and activity
- Compact size for the desktop or for mounting in a standard 19 -inch rack
- Backed by a NETGEAR Lifetime Warranty*

Page 2	Models at a Glance
Page 3	Network Diagram
Page 4	Product Specifications
Page 5	Technical Specifications
Page 5	Ordering Information



Hardware at a Glance

		FRONT		REAR
Model Name	Form-Factor	10/100Base-T RJ45 Ports	LED	Power Supply
JFS516v2	Rackmount	16	Speed, Link and Activity	Internal
JFS524v2	Rackmount	24	Speed, Link and Activity	Internal



JFS516v2 is a 16-port 10/100Base-T Fast Ethernet Switch

- Fanless
- Rack-mountable



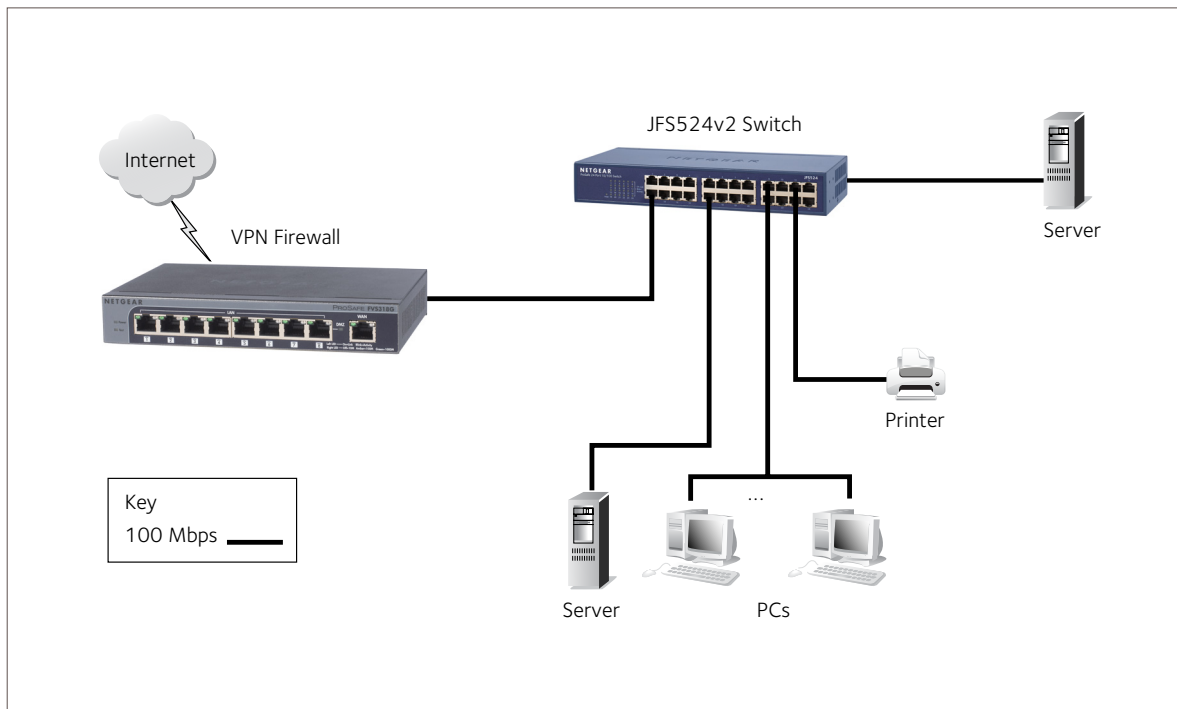
JFS524v2 is a 24-port 10/100base-T Fast Ethernet Switch

- Fanless
- Rack-mountable

Performance at a Glance

Model Name	Packet buffer	MAC address table	Switching Fabric	Jumbo Frames	IEEE 802.1p
JFS516v2	2Mb	8K	3.2Gbps	2KB	Yes
JFS524v2	2Mb	8K	4.8Gbps	2KB	Yes

Example of a Network Diagram



The NETGEAR ProSAFE Fast Ethernet Switch, the right-sized solution with the best value

- Fast Ethernet for the best value at the most affordable price
- IEEE 802.1p QoS for traffic prioritization
- Fanless design for quiet operation
- Energy Efficient Ethernet (EEE) for optimized power and cost savings
- Lifetime warranty for peace-of-mind

Product Specifications

FEATURES	JFS516v2	JFS524v2
Ethernet Speed	10/100Mbps Fast Ethernet	10/100Mbps Fast Ethernet
Number of ports	16	24
Short cable power saving	Yes	Yes
Energy Efficient Ethernet Support IEEE 802.3az	Yes	Yes
Queue WRR Ratio	8:4:2:1	8:4:2:1
MAC Table Size	8K	8K
Packet buffer Size	2Mb	2Mb
Jumbo Frames	2KB	2KB
IEEE 802.1p QoS	Yes	Yes
MTBF (hours)	2,956,082	2,940,540
IEEE NETWORK PROTOCOLS		
IEEE 802.3 Ethernet IEEE 802.3i 10BASE-T	IEEE 802.3i 10BASE-T IEEE 802.3x Full-duplex Flow Control	IEEE 802.3u 100BASE-T IEEE 802.1p Class of Service
PHYSICAL SPECIFICATIONS		
Weight (kg)	0.92 (2.03 lbs)	1.00 (2.20 lbs)
Dimensions (WxDxH) mm	280 x 126 x 44 mm	280 x 126 x 44 mm
POWER CONSUMPTION (WHEN ALL PORTS USED, LINE-RATE TRAFFIC)		
Worst case, all ports used, line-rate traffic	2.7W	4.0W

Technical Specifications

LEDs

Per port

- Speed, Link, Activity

Per device

- Power

Environmental Conditions

Operating

Temperature

- 32° to 122°F (0° to 50°C)

Humidity

- 90% maximum relative humidity, non-condensing

Altitude

- 10,000 ft (3,000 m) maximum

Storage

Temperature

- – 4° to 158°F (–20° to 70°C)

Humidity

- 95% maximum relative humidity, non-condensing

Altitude

- 10,000 ft (3,000 m) maximum

Electromagnetic Emissions and Immunity

Certifications

- CE Class A
- FCC Part 15 Class A
- VCCI Class A
- EN 55022 (CISPR 22) Class A
- EN 55024
- CCC

Safety

Certifications

- UL listed (UL 1950)/cUL IEC 950/EN 60950
- CCC (China Compulsory Certificate)
- CB
- KCC
- GHOST

Warranty and Support*

- ProSAFE Lifetime Warranty
- Lifetime 24x7 Online Chat Technical Support
- 90 days (24/7) Live Phone Technical Support
- Lifetime Next Business Day (NBD) Hardware Replacement

ProSUPPORT Service Packs Available

- On Call 24 x 7, Category 1**
 - PMB0311 (1 yr.)
 - PBM0331 (3 yrs.)
 - PMB0351 (5 yrs.)

Ordering Information

Package Content

- 16- or 24-port Fast Ethernet Switch (JFS516v2 or JFS524v2)
- Power cord
- Rack-mounting kit
- Hardware Install Guide

Ordering Information

North America and Latin America:

JFS516-200NAS
JFS524-200NAS

Europe:

JFS516-200EUS
JFS524-200EUS

Asia:

JFS516-200AUS
JFS524-200AUS

China:

JFS524-200PRS

* This product comes with a limited warranty that is valid only if purchased from a NETGEAR authorized reseller, and modifications to product may void the warranty; covers hardware, fans, and internal power supplies—not software or external power supplies; see <http://www.netgear.com/about/warranty/> for details. 2-year warranty on power adapters on applicable models. Lifetime technical support includes basic phone support for 90 days from purchase date and lifetime online chat support when purchased from a NETGEAR authorized reseller.

** The NETGEAR OnCall 24x7 contract provides unlimited phone and email technical support for your networking product. For ProSAFE products purchased prior to 06/2014, also includes next business day hardware replacement.

† NETGEAR #1 in US Market Share according to NPD data for Unmanaged and Web/Smart Switches, April 2015.

NETGEAR, the NETGEAR Logo, ProSUPPORT and ProSAFE are trademarks of NETGEAR, Inc. in the United States and/or other countries. Other brand names mentioned herein are for identification purposes only and may be trademarks of their respective holder(s). Information is subject to change without notice. © 2015 NETGEAR, Inc. All rights reserved.