




Dell S3422DW

User's Guide

Monitor Model: S3422DW
Regulatory Model: S3422DWc



-  **NOTE:** A NOTE indicates important information that helps you make better use of your computer.
-  **CAUTION:** A CAUTION indicates potential damage to hardware or loss of data if instructions are not followed.
-  **WARNING:** A WARNING indicates a potential for property damage, personal injury, or death.

Copyright © 2021 Dell Inc. or its subsidiaries. All rights reserved. Dell, EMC, and other trademarks are trademarks of Dell Inc. or its subsidiaries. Other trademarks may be trademarks of their respective owners.

2021 – 04

Rev. A01



Contents

Safety instructions	6
About your monitor	7
Package contents	7
Product features	8
Identifying parts and controls	10
Front view	10
Back view	11
Side view	12
Bottom view	12
Monitor specifications	14
Resolution specifications	15
Supported video modes	16
Preset display modes	16
Electrical specifications	17
Physical characteristics	18
Environmental characteristics	19
Plug and play capability	20
LCD monitor quality and pixel policy	20
Ergonomics	21
Handling and moving your display	23
Maintenance guidelines	24
Cleaning your monitor	24



- Setting up the monitor 25**
 - Connecting the stand 25
 - Connecting your monitor 26
 - Connecting the HDMI and USB 3.0 cable. 26
 - Organizing cables 27
 - Securing your monitor using Kensington/Noble lock (optional). 27
 - Removing the stand 28
 - Wall mounting (optional) 29
- Operating your monitor 31**
 - Power on the monitor 31
 - Using the control buttons 31
 - Control buttons 32
 - OSD controls 33
 - Using the On-Screen Display (OSD) menu 34
 - Accessing the OSD menu 34
 - Menu and Power button lock 45
 - OSD warning messages 47
- Setting up your monitor 50**
 - Setting the maximum resolution 50
 - If you have a Dell desktop or a Dell portable computer with internet access 50
 - If you have a non Dell desktop, portable computer, or graphics card 51
- Using the tilt and vertical extension. 52**
 - Tilt Extension 52



Vertical Extension 52

Troubleshooting 53

 Self-Test 53

 Built-in diagnostics 55

 Common problems 57

 Product-specific problems 60

Appendix. 61

 Safety Instructions. 61

 FCC notices (U.S. Only) and other regulatory information 61

 Contacting Dell. 62

 Stability Hazard. 63



Safety instructions

△ CAUTION: Use of controls, adjustments, or procedures other than those specified in this documentation may result in exposure to shock, electrical hazards, and/or mechanical hazards.


- Place the monitor on a solid surface and handle it carefully. The screen is fragile and can be damaged if dropped or hit sharply.
- Always be sure that your monitor is electrically rated to operate with the AC power available in your location.
- Keep the monitor in room temperature. Excessive cold or hot conditions can have an adverse effect on the liquid crystal of the display.
- Do not subject the monitor to severe vibration or high impact conditions. For example, do not place the monitor inside a car trunk.
- Unplug the monitor when it is going to be left unused for an extended period of time.
- To avoid electric shock, do not attempt to remove any cover or touch the inside of the monitor.








About your monitor



Package contents

Your monitor ships with the components shown below. Ensure that you have received all the components and see [Contacting Dell](#) for more information if something is missing.

 **NOTE: Some items may be optional and may not ship with your monitor. Some features or media may not be available in certain countries.**

	Monitor
	Stand riser
	Stand base
	Power cable (varies by countries)
	HDMI 2.0 cable



	<p>USB 3.0 upstream cable (enables the USB ports on the monitor)</p>
	<ul style="list-style-type: none"> • Quick Setup Guide • Safety and Regulatory Information

Product features

The Dell S3422DW monitor has an active matrix, Thin-Film Transistor (TFT), Liquid Crystal Display (LCD), anti-static, and LED backlight. The monitor features include:

- 86.42 cm (34.0 in.) viewable area display (measured diagonally), 3440 x 1440 resolution, with full-screen support for lower resolutions.
- Compatible with (AMD FreeSync™ or No Sync), high refresh rates and a rapid response time of 4 ms.
- Supports 48 Hz to 144 Hz (HDMI) and 48 Hz to 164 Hz (DP) in Freesync Mode.
- Build-in Speaker (5 W) x 2
- Color gamut of 99% sRGB.
- Digital connectivity with DP and HDMI.
- Equipped with 1 USB upstream port and 2 USB downstream ports.
- Plug and play capability if supported by your computer.
- On-Screen Display (OSD) adjustments for ease of setup and screen optimization.
- Removable stand and Video Electronics Standards Association (VESA™) 100 mm mounting holes for flexible mounting solutions.
- Tilt and height adjustment capabilities.
- Security-lock slot.
- ≤0.3 W in the Standby Mode
- Dell Display Manager Software included.
- Optimize eye comfort with a flicker-free screen.

⚠ WARNING: The possible long-term effects of blue light emission from



the monitor may cause damage to the eyes, including eye fatigue, digital eye strain, and so on. ComfortView feature is designed to reduce the amount of blue light emitted from the monitor to optimize eye comfort.

⚠ WARNING: If provided with a 3-pin attachment plug on the power cord, plug the cord into a grounded (earthed) 3-pin outlet. Do not disable the power cord grounding pin, for example, by attaching a 2-pin adapter. The grounding pin is an important safety feature.

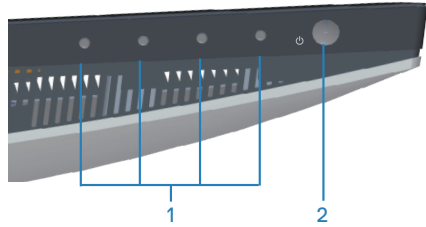
⚠ WARNING: The possible long-term effects of blue light emission from the monitor may cause damage to the eyes, including eye fatigue, digital eye strain, and so on. ComfortView feature is designed to reduce the amount of blue light emitted from the monitor to optimize eye comfort.

⚠ WARNING: Please confirm the distribution system in building installation shall provide the circuit breaker rated 120/240V, 20A (maximum).



Identifying parts and controls

Front view

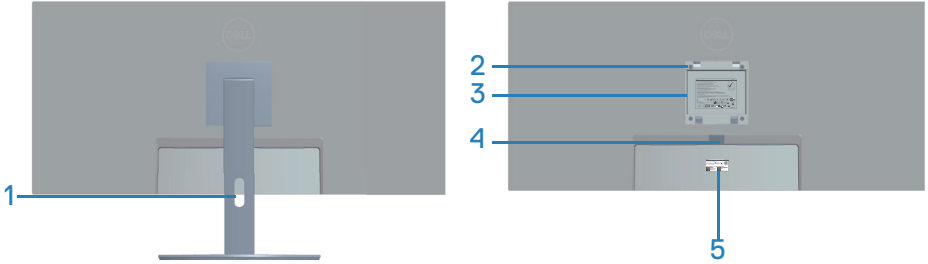


Control buttons

Label	Description	Use
1	Function buttons	Press the function buttons to adjust items in the OSD menu. (For more information, see Using the control buttons)
2	Power On/Off button	Press the power button to turn the monitor on and off. Solid white light indicates the monitor is turned on and functioning normally. Blinking white light indicates the monitor is in Standby Mode.



Back view

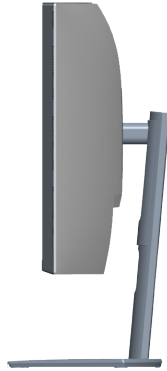


Back View with monitor stand

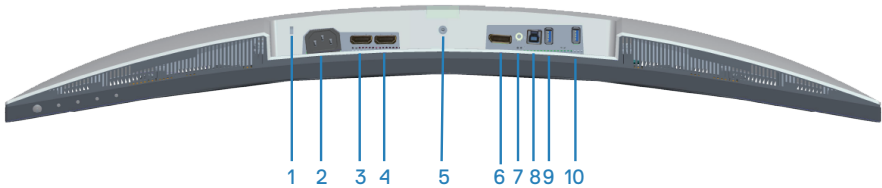
Label	Description	Use
1	Cable management slot	Organizes the cables when the cables are routed through the slot.
2	VESA mounting holes (behind VESA cover)	VESA mounting holes (100 mm x 100 mm). Use for Wall mounting the monitor through a VESA-compatible wall mount kit.
3	Regulatory information label	Lists the regulatory approvals.
4	Stand release button	Releases stand from monitor.
5	Regulatory label (including Barcode serial number and Service Tag label)	Lists the regulatory approvals. Refer to this label if you need to contact Dell for technical support. The Service Tag is a unique alphanumeric identifier that enables Dell service technicians to identify the hardware components in your computer and access warranty information.



Side view




Bottom view



Bottom view without monitor stand

Label	Description	Use
1	Security-lock slot	Secure your monitor using a security lock (purchased separately) to prevent unauthorized movement of your monitor.
2	Power connector	Connect the power cable (shipped with your monitor).
3	HDMI 1 2.0 port	Connect to your computer using a HDMI cable.
4	HDMI 2 2.0 port	Connect to your computer using a HDMI cable.
5	Stand lock feature	Lock the stand to the monitor using a M3 x 6 mm screw (screw not included).
6	DP 1.2 port	Connect to your computer using a DP cable.
7	Audio line out port	Connect to an external speaker or a sub-woofer (purchased separately).*
8	USB 3.0 upstream port	Connect the USB cable from this port to your computer to enable the USB ports on your monitor.



9	USB 3.0 downstream ports	<p>Connect your USB peripherals such as storage devices and printers.</p> <p> NOTE: To use this port, you must connect the USB upstream cable (shipped with your monitor) between the monitor and the computer.</p>
10	USB 3.0 downstream with BC1.2 charging	<p>USB 3.0 downstream port with charging capability. Connect to charge your USB device.</p>

*Audio line out port does not support headphones.



Monitor specifications

Model	S3422DW
Screen type	Active matrix-TFT LCD
Panel type	Vertical Alignment
Viewable image	
Diagonal	864.2 mm (34.0 in.)
Horizontal, Active Area	797.2 mm (31.19 in.)
Vertical, Active Area	333.7 mm (13.14 in.)
Area	266048.26 mm ² (412.38 in. ²)
Native resolution and refresh rate	3440 x 1440 at 100 Hz (HDMI1 and HDMI2) 3440 x 1440 at 100 Hz (DP)
Pixel pitch	0.23175 mm x 0.23175 mm
Pixel per inch (PPI)	109
Viewing angle	
Horizontal	178° (typical)
Vertical	178° (typical)
Luminance output	300 cd/m ² (typical)
Contrast ratio	3000 to 1 (typical)
Faceplate coating	Anti-glare with 3H hardness, Haze 40%
Backlight	LED edgelight system
Response time (Gray to Gray)	4 ms
Color depth	16.7 million colors
Color gamut	sRGB CIE 1931 (99.7%) CIE1976 (98.8%) DCI P3 CIE 1931 (89.2%) CIE1976 (92.4%)



Connectivity	2 x HDMI 2.0 with HDCP 2.2 1 x DP 1.2 port 1 x USB 3.0 upstream 1 x USB 3.0 downstream 1 x USB 3.0 downstream with BC 1.2 charging 1 x Audio line out
Bezel width (edge of monitor to active area)	
Top	8.64 mm
Left/Right	8.65 mm
Bottom	22.14 mm
Adjustability	
Height adjustable stand	100 mm
Tilt	-5° to 21°
Swivel	N/A
Slant Adjust	-4° to 4°
Dell display manager compatibility	Easy Arrange and other key features
Security	Security-lock slot (cable lock optional purchase)

Resolution specifications

Model	S3422DW
Horizontal scan range	30 kHz to 160 kHz
Vertical scan range	48 Hz to 100 Hz (HDMI) 48 Hz to 100 Hz (DP)
Maximum preset resolution	3440 x 1440 at 100 Hz (DP) 3440 x 1440 at 100 Hz (HDMI)



Supported video modes

Model	S3422DW
Video display capabilities (HDMI/DP)	480p, 480i(HDMI), 576p, 720p, 1080p, 576i(HDMI), 1080i(HDMI)

Preset display modes

Display Mode	Horizontal Frequency (kHz)	Vertical Frequency (Hz)	Pixel Clock (MHz)	Sync Polarity (Horizontal / Vertical)
VESA, 640 x 480	31.47	59.94	25.18	-/-
VESA,640 x 480	37.50	75.00	31.50	-/-
IBM, 720 x 400	31.47	70.08	28.32	-/+
VESA,800 x 600	37.88	60.32	40.00	+/+
VESA,800 x 600	46.88	75.00	49.50	+/+
VESA,1024 x 768	48.36	60.00	65.00	-/-
VESA,1024 x 768	60.02	75.03	78.75	+/+
VESA,1152 x 864	67.50	75.00	108.00	+/+
VESA,1280 x 1024	63.98	60.02	108.00	+/+
VESA,1280 x 1024	79.98	75.02	135.00	+/+
VESA,1600 x 900	60.00	60.00	108.00	+/+
VESA,1600 x 1200	75.00	60.00	162.00	+/+
VESA,1680 x 1050	65.29	59.95	146.25	-/+
VESA,1920 x 1080	67.50	60.00	148.50	+/+
VESA,1920 x 1080	113.22	100.00	235.50	+/-
VESA,1920 x 1200	74.04	59.95	154.00	+/-
VESA,2560 x 1080	66.66	60.00	185.58	+/-
VESA,2560 x 1080	113.24	100.00	308.00	+/-
VESA,3440 x 1440	73.68	49.99	265.25	+/-
VESA,3440 x 1440	88.82	59.97	319.75	+/-
VESA,3440 x 1440	150.97	99.98	543.50	+/-

 **NOTE: This monitor supports AMD FreeSync.**



Electrical specifications

Model	S3422DW
Video input signals	HDMI 2.0 (HDCP), 600 mV for each differential line, 100 ohm input impedance per differential pair DP 1.2, 600 mV for each differential line, 100 ohm input impedance per differential pair
AC input voltage/frequency/current	100 VAC to 240 VAC / 50 Hz or 60 Hz \pm 3 Hz / 1.6A (max.)
Inrush current	120 V: 30 A (Max.) at 0°C (cold start) 240 V: 60 A (Max.) at 0°C (cold start)
Power Consumption	0.3 W (Off Mode) ¹ 0.3 W (Standby Mode) ¹ 32 W (On Mode) ¹ 95 W (Max) ² 39 W (Pon) ³ 122 kWh (TEC) ³

¹ As defined in EU 2019/2021 and EU 2019/2013.

² Max brightness and contrast setting with maximum power loading on all USB ports.

³ Pon: Power consumption of On Mode measured with reference to Energy Star test method.

TEC: Total energy consumption in kWh measured with reference to Energy Star test method.

This document is informational only and reflects laboratory performance. Your product may perform differently, depending on the software, components and peripherals you ordered and shall have no obligation to update such information. Accordingly, the customer should not rely upon this information in making decisions about electrical tolerances or otherwise. No warranty as to accuracy or completeness is expressed or implied.



Physical characteristics

Model	S3422DW
Signal cable type	<ul style="list-style-type: none">• Digital: HDMI, 19 pins• Universal Serial Bus: USB, 9 pins
Dimensions (with stand)	
Height (extended)	489.36 mm (19.28 in.)
Height (compressed)	389.36 mm (15.33 in.)
Width	808.16 mm (31.82 in.)
Depth	210 mm (8.27 in.)
Dimensions (without stand)	
Height	364.50 mm (14.35 in.)
Width	808.16 mm (31.82 in.)
Depth	64.01 mm (2.52 in.)
Stand dimensions	
Height	382.20 mm (15.05 in.)
Width	302 mm (11.90 in.)
Depth	210 mm (8.27 in.)
Weight	
Weight with packaging	14.92 kg (32.89 lb)
Weight with stand assembly and cables	10.16 kg (22.40 lb)
Weight without stand assembly (no cables)	6.70 kg (14.77 lb)
Weight of stand assembly	3.10 kg (6.83 lb)
Front-frame gloss	Black frame 2-4 gloss units



Environmental characteristics

Model	S3422DW
Compliant Standards	
<ul style="list-style-type: none"> • RoHS-compliant • BFR/PVC reduce monitor • Arsenic-free glass and Mercury-free for the panel only • Energy Gauge shows the energy level being consumed by the monitor in real time. 	
Temperature	
Operating	0°C to 40°C (32°F to 104°F)
Non-operating	<ul style="list-style-type: none"> • Storage: -20°C to 60°C (-4°F to 140°F) • Shipping: -20°C to 60°C (-4°F to 140°F)
Humidity	
Operating	10% to 80% (non-condensing)
Non-operating	<ul style="list-style-type: none"> • Storage 10% to 90% (non-condensing) • Shipping 10% to 90% (non-condensing)
Altitude	
Operating (maximum)	5,000 m (16,400 ft)
Non-operating (maximum)	12,192 m (40,000 ft)
Thermal dissipation	<ul style="list-style-type: none"> • 324.3699 BTU/hour (maximum) • 129.74796 BTU/hour (typical)



Plug and play capability

You can install the monitor in any Plug and Play-compatible system. The monitor automatically provides the computer system with its Extended Display Identification Data (EDID) using Display Data Channel (DDC) protocols so the system can configure itself and optimize the monitor settings. Most monitor installations are automatic, you can select different settings if desired. For more information about changing the monitor settings, see [Operating your monitor](#).


LCD monitor quality and pixel policy

During the LCD Monitor manufacturing process, it is not uncommon for one or more pixels to become fixed in an unchanging state which are hard to see and do not affect the display quality or usability. For more information on Dell Monitor Quality and Pixel Policy, see Dell Support site at www.dell.com/support/monitors



Ergonomics

 **CAUTION: Improper or prolonged usage of keyboard may result in injury.**

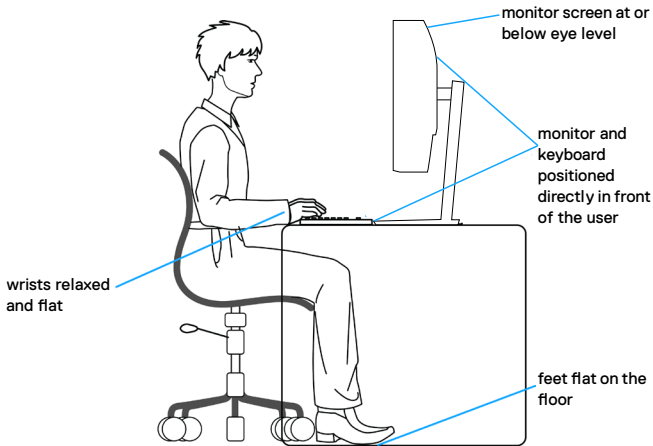
 **CAUTION: Viewing the monitor screen for extended periods of time may result in eye strain.**

For comfort and efficiency, observe the following guidelines when setting up and using your computer workstation:

- Position your computer so that the monitor and keyboard are directly in front of you as you work. Special shelves are commercially available to help you correctly position your keyboard.
- To reduce the risk of eye strain and neck/arm/back/shoulder pain from using the monitor for long periods of time, we suggest you to:
 1. Set the distance of the screen between 20 to 28 in. (50 - 70 cm) from your eyes.
 2. Blink frequently to moisten your eyes or wet your eyes with water after prolonged usage of the monitor.
 3. Take regular and frequent breaks for 20 minutes every two hours.
 4. Look away from your monitor and gaze at a distant object at 20 feet away for at least 20 seconds during the breaks.
 5. Perform stretches to relieve tension in the neck, arm, back, and shoulders during the breaks.
- Make sure that the monitor screen is at eye level or slightly lower when you are sitting in front of the monitor.
- Adjust the tilt of the monitor, its contrast, and brightness settings.
- Adjust the ambient lighting around you (such as overhead lights, desk lamps, and the curtains or blinds on nearby windows) to minimize reflections and glare on the monitor screen.
- Use a chair that provides good lower-back support.
- Keep your forearms horizontal with your wrists in a neutral, comfortable position while using the keyboard or mouse.
- Always leave space to rest your hands while using the keyboard or mouse.
- Let your upper arms rest naturally on both sides.
- Ensure that your feet are resting flat on the floor.



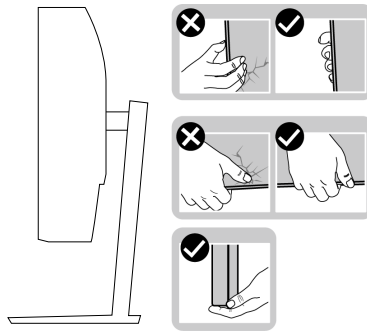
- When sitting, make sure that the weight of your legs is on your feet and not on the front portion of your seat. Adjust your chair's height or use a footrest if necessary to maintain a proper posture.
- Vary your work activities. Try to organize your work so that you do not have to sit and work for extended periods of time. Try to stand or get up and walk around at regular intervals.
- Keep the area under your desk clear of obstructions and cables or power cords that may interfere with comfortable seating or present a potential trip hazard.



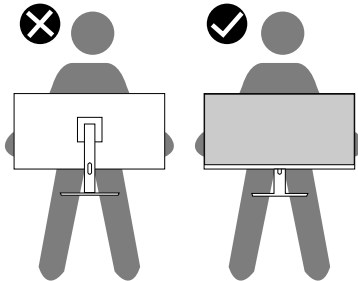
Handling and moving your display

To ensure the monitor is handled safely when lifting or moving it, follow the guidelines mentioned below:

- Before moving or lifting the monitor, turn off your computer and the monitor.
- Disconnect all cables from the monitor.
- Place the monitor in the original box with the original packing materials.
- Hold the bottom edge and the side of the monitor firmly without applying excessive pressure when lifting or moving the monitor.

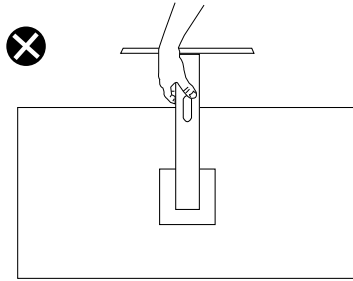


- When lifting or moving the monitor, ensure the screen is facing away from you and do not press on the display area to avoid any scratches or damage.



- When transporting the monitor, avoid any sudden shock or vibration to it.
- When lifting or moving the monitor, do not turn the monitor upside down while holding the stand base or stand riser. This may result in accidental damage to the monitor or cause personal injury.





Maintenance guidelines

Cleaning your monitor

⚠ WARNING: Before cleaning the monitor, unplug the monitor power cable from the electrical outlet.

⚠ CAUTION: Read and follow the [Safety Instructions](#) before cleaning the monitor.

For best practices, follow the instructions in the list below while unpacking, cleaning or handling your monitor:

- To clean your screen, lightly dampen a soft, clean cloth with water. If possible, use a special screen-cleaning tissue or solution suitable for the anti-static coating. Do not use benzene, thinner, ammonia, abrasive cleaners or compressed air.
- Use a lightly-dampened cloth to clean the monitor. Avoid using detergent of any kind as some detergents leave a milky film on the monitor.
- If you notice white powder when you unpack your monitor, wipe it off with a cloth.
- Handle your monitor with care as the black-colored monitor may get scratched and show white scuff marks.
- To help maintain the best image quality on your monitor, use a dynamically changing screen saver and turn off your monitor when not in use.



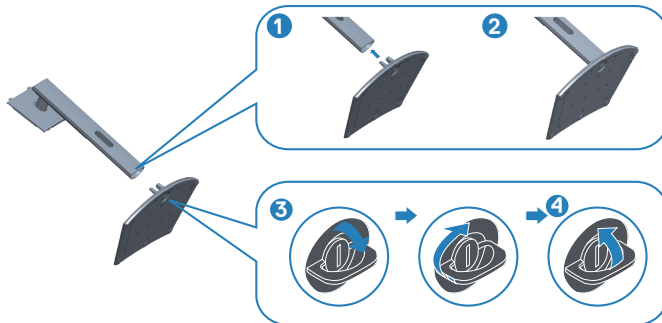
Setting up the monitor

Connecting the stand

- ✎ **NOTE:** The stand is detached when the monitor is shipped from the factory.
- ✎ **NOTE:** The following procedure is applicable for the stand that shipped with your monitor. If you are connecting a third-party stand, see the documentation that shipped with the stand.

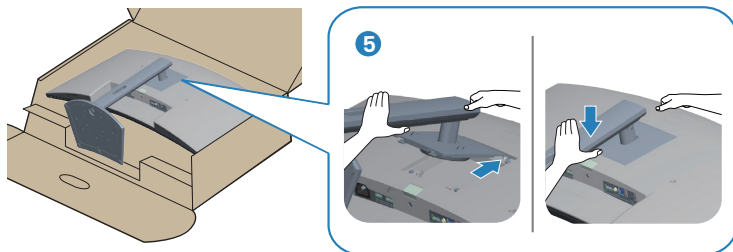
To attach the monitor stand:

1. Follow the instructions on the flaps of carton to remove the stand from the top cushion that secures it.
2. Connect the stand base to the stand riser.
3. Open the screw handle on the stand base and tighten the screw to secure the stand riser to the stand base.
4. Close the screw handle.



5. Slide the tabs on the stand assembly into the slots on the monitor and press the stand assembly down to snap it into place.





6. Place the monitor upright.

Connecting your monitor

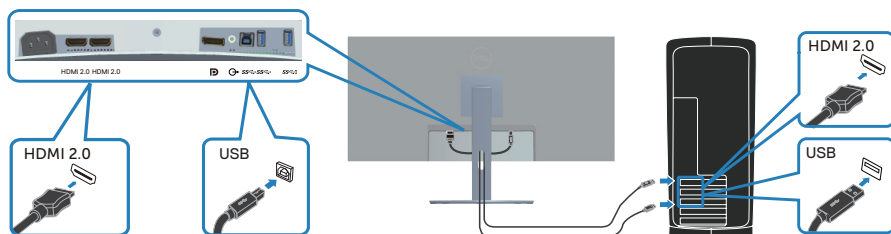
⚠ WARNING: Before you begin any of the procedures in this section, follow the [Safety Instructions](#).

📎 NOTE: Do not connect all cables to the computer at the same time. It is recommend to route the cables through the cable-management slot before you connect them to the monitor.

To connect your monitor to the computer:

1. Turn off your computer and disconnect the power cable.
2. Connect the HDMI or DP cable (optional purchase) from your monitor to the computer.
3. Connect the USB upstream cable (shipped with your monitor) to an appropriate USB 3.0 port on your computer. (See [Bottom view](#) for details.)
4. Connect the USB 3.0 peripherals to the downstream USB 3.0 ports on the monitor.

Connecting the HDMI and USB 3.0 cable

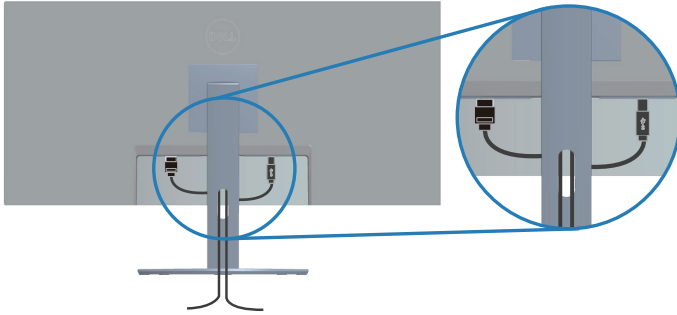


5. Connect the power cables from your computer and monitor into a wall outlet.



Organizing cables

Use the cable-management slot to route the cables connected to your monitor.

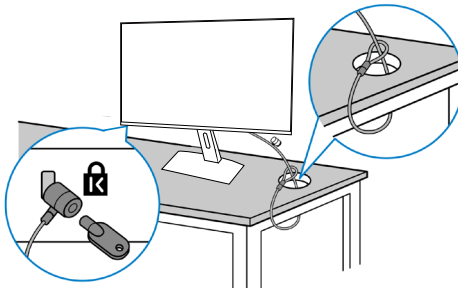


Securing your monitor using Kensington/Noble lock (optional)

The security lock slot is located at the bottom of the monitor. (See [Security lock slot](#))

For more information on using the Kensington/Noble lock (purchased separately), see the documentation that is shipped with the lock.

Secure your monitor to a table using the Kensington/Noble security lock.




 **NOTE: The image is for the purpose of illustration only. Appearance of the lock may vary.**



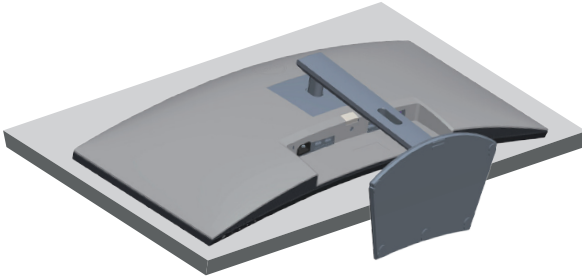
Removing the stand

 **NOTE:** To prevent scratches on the screen when removing the stand, ensure that the monitor is placed on a soft and clean surface.

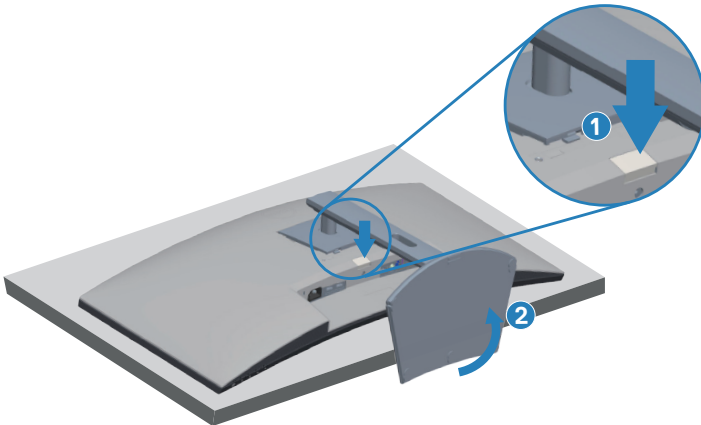
 **NOTE:** The following procedure is applicable only for the stand that shipped with your monitor. If you are connecting a third-party stand, see the documentation that shipped with the stand.

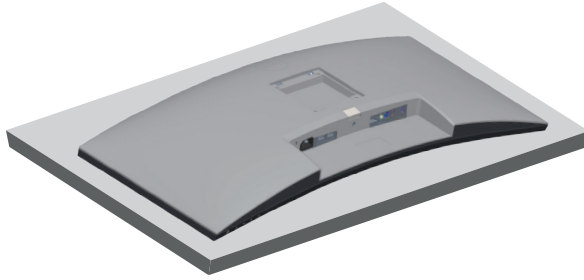
To remove the stand:

1. Place the monitor on a soft cloth or cushion at the edge of the desk.

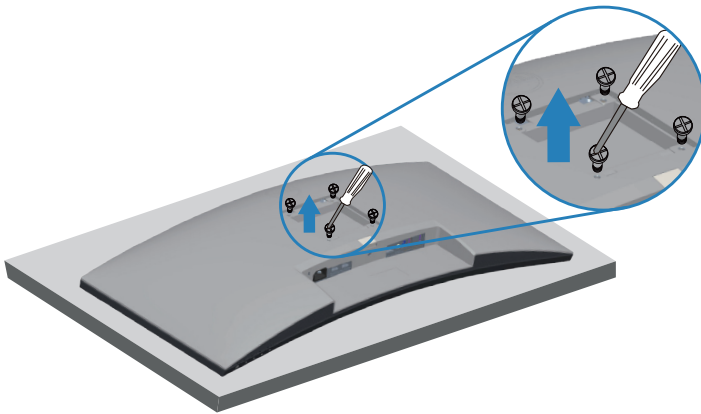


2. Press and hold the stand release button, and then lift the stand off the monitor.






Wall mounting (optional)



(Screw dimension: M4 x 10 mm).

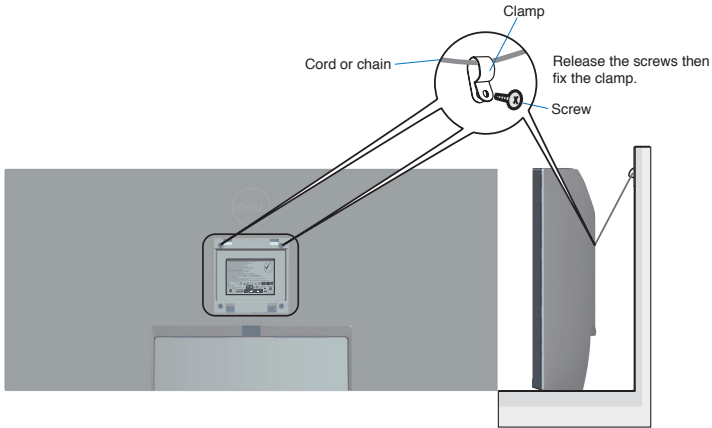
See the documentation that shipped with the VESA-compatible wall mounting kit.

1. Lay the monitor on a soft cloth or cushion at the edge of the desk.
2. Remove the stand. See [Removing the stand](#) for details.
3. Remove the four screws that secure the panel to the monitor.
4. Attach the mounting bracket from the wall mounting kit to the monitor.
5. To mount the monitor on the wall, see the documentation that shipped with the wall mounting kit.

 **NOTE: For use only with UL or CSA or GS-listed wall mount bracket with minimum weight/load bearing capacity of 26.80 kg.**



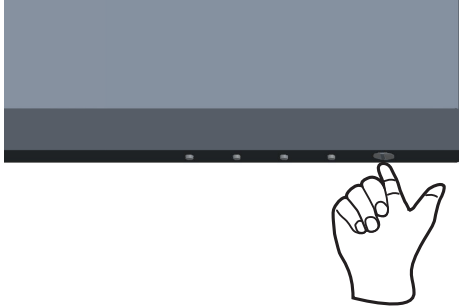
⚠ NOTE: When using the display, fasten the LCD to a wall using a cord or chain that can support the weight of the monitor in order to prevent the monitor from falling. Installing must be done by a qualified technician, and please contact your supplier for more information.



Operating your monitor

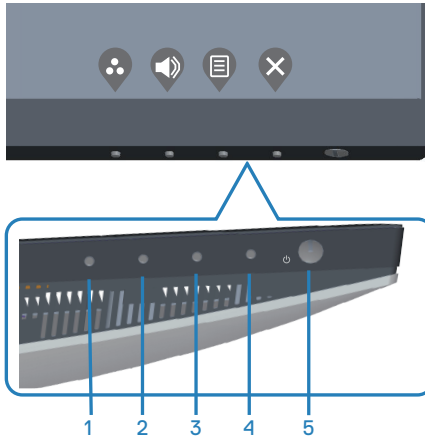
Power on the monitor

Press the  button to turn on the monitor.








Using the control buttons

Use the control buttons at the bottom edge of the monitor to adjust the image being displayed.



Control buttons

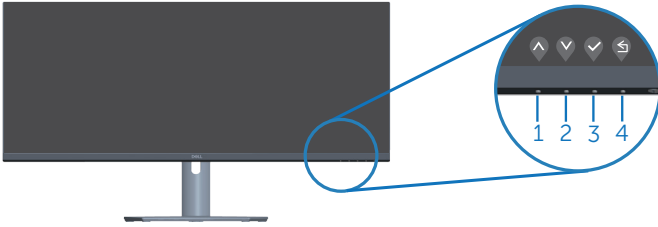
The following table describes the control buttons:





Control Buttons	Description
1  Shortcut key/Preset Modes	Use this button for choose from a list of preset modes.
2  Shortcut key/Input Source	Use the buttons to adjust the volume. Minimum is '0' (-). Maximum is '100' (+).
3  Menu	Use the Menu button at launch your on-screen display (OSD) and select the OSD menu. See Accessing the OSD menu .
4  Exit	Use this button to go back to the main menu or exit the OSD main menu.
5  Power On/Off button (with LED indicator)	Use the power button to turn the monitor on and off. Solid white light indicates the monitor is turned on. Blinking white light indicates it is in Standby mode.



OSD controls

Use the buttons on the bottom of the monitor to adjust the image settings.




	Control Buttons	Description
1	 Up	Use the Up button to increase values or move up in a menu.
2	 Down	Use the Down button to decrease values or move down in a menu.
3	 OK	Use the OK button to confirm your selection in a menu.
4	 Back	Use the Back button to go back to the previous menu.

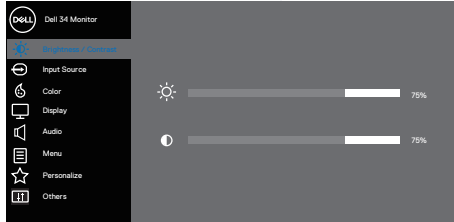














Using the On-Screen Display (OSD) menu

Accessing the OSD menu


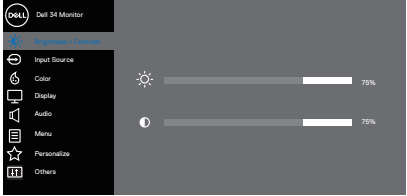








 **NOTE:** Any changes you make are automatically saved when you move to another menu, exit the OSD menu, or wait for the OSD menu to automatically close.

1. Press the  button to display the OSD main menu.



2. Press the  and  buttons to move between the setting options. As you move from one icon to another, the option is highlighted.
3. Press the , , or  button once to activate the highlighted option.
4. Press  and  button to select the desired parameter.
5. Press  and then use the  and  buttons, according to the indicators on the menu, to make your changes.
6. Select the  to return to previous menu or  to accept and return to previous menu.



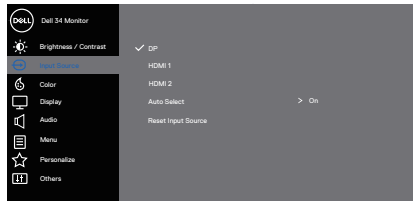
Icon	Menu and Sub-menus	Description
	Brightness/ Contrast	<p>Use this menu to adjust the brightness and contrast.</p>  <p style="text-align: right;">     </p>
	Brightness	<p>Adjust the brightness of the backlight.</p> <p>Press the  button to increase the brightness and press the  button to decrease the brightness (min. 0 / max. 100).</p>
	Contrast	<p>Adjust the brightness first, and then adjust the contrast only if further adjustment is necessary.</p> <p>Press the  button to increase the contrast and press the  button to decrease the contrast (min. 0 / max. 100).</p> <p>The Contrast function adjusts the degree of difference between darkness and lightness on the monitor screen.</p>





Input Source

Use the input source menu to select between the different video signals that may be connected to your monitor.



DP

Select DP input when you are using the DP connector. Push to select the DP input source.

HDMI 1

Select HDMI 1 input when you are using the HDMI 1 connector. Push to select the HDMI input source.

HDMI 2

Select HDMI 2 input when you are using the HDMI 2 connector. Push to select the HDMI input source.

Auto Select

Select auto select to scan for available input signals.

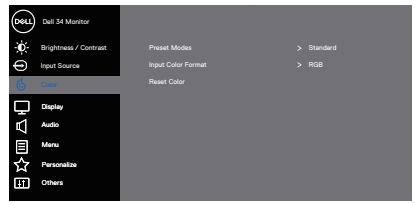
Reset Input Source

Select this option to restore default Input Source.



Color

Change the color setting mode.




Preset Modes

When you select **Preset Modes**, you can choose **Standard**, **Comfortview**, **Movie**, **FPS Game**, **RTS Game**, **RPG Game**, **Warm**, **Cool**, or **Custom color** from the list.



- **Standard:** Loads the monitor's default color settings. This is the default preset mode.

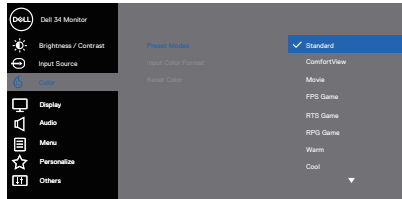
- **ComfortView:** Decreases the level of blue light emitted from the screen to make viewing more comfortable for your eyes.

 **NOTE:** To reduce the risk of eye strain and neck/arm/back/shoulders pain from using the monitor for long periods of time, we suggest you to:

- Set the screen about 20 to 28 in. (50-70 cm) from your eyes.
- Blink frequently to moisten or rewet your eyes when working with the monitor.
- Take regular and frequent breaks for 20 minutes every two hours.
- Look away from your monitor and gaze at a distant object at 20 feet away for at least 20 seconds during the breaks.
- Perform stretches to relieve tension in the neck/arm/back/shoulders during the breaks.
- **Movie:** Loads color settings ideal for movies.
- **FPS Game:** Loads color settings ideal for First-Person Shooter games.
- **RTS Game:** Loads color settings ideal for Real-time Strategy games.
- **RPG Game:** Loads color settings ideal for Role-Playing games.
- **Warm:** Increases the color temperature. The screen appears warmer with a red/yellow tint.
- **Cool:** Decreases the color temperature. The screen appears cooler with a blue tint.
- **Custom Color:** Allows you to manually adjust the color settings.



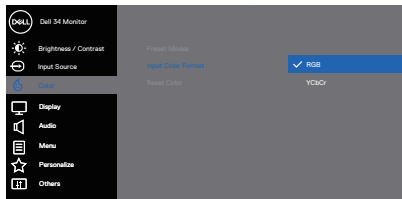
Press the  and  buttons to adjust the three colors (R, G, B) values and create your own preset color mode.



Input Color Format

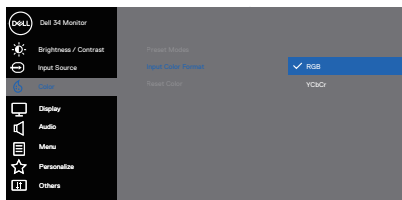
Allows you to set the video input mode to:




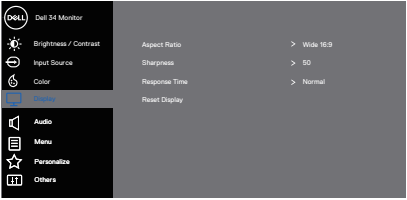
- **RGB:** Select this option if your monitor is connected to a computer or a media player that supports RGB output.
- **YCbCr/YPbPr*:** Select this option if your media player supports only YCbCr/YPbPr output.




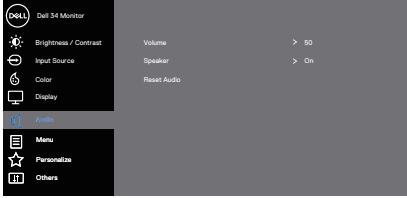





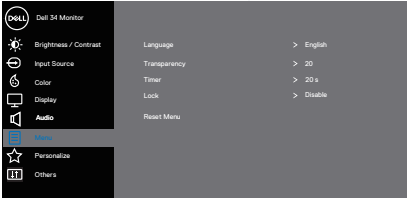








*When VGA input is selected.

- **RGB:** Select this option if your monitor is connected to a computer or a media player that supports RGB output.
- **YCbCr:** Select this option if your media player supports only YCbCr output.



	Hue	<p>Use this feature to adjust the flesh tone color in the video image. Press ▲ or ▼ to adjust the hue from 0 to 100.</p> <p>Press ▲ to increase the green shade of the video image.</p> <p>Press ▼ to increase the purple shade of the video image.</p> <p> NOTE: Hue adjustment is available only when you select Movie and Game mode.</p>
	Saturation	<p>This feature can adjust the color saturation of the video image. Use ▲ or ▼ to adjust the saturation from 0 to 100.</p> <p>Press ▲ to increase the monochrome appearance of the video image.</p> <p>Press ▼ to increase the colorful appearance of the video image.</p> <p> NOTE: Saturation adjustment is available only when you select Movie and Game mode.</p>
	Reset Color	Allows your monitor color settings to the factory settings.
	Display	<p>Use the display to adjust image.</p> <div data-bbox="520 882 927 1125" style="border: 1px solid black; padding: 5px;">  </div> <p style="text-align: right; margin-top: 10px;">▲ ▼ ▷ ✕</p>
	Aspect Ratio	Adjusts the image ratio to Wide 21:9, Auto Resize, 4:3 or 1:1
	Sharpness	This feature can make the image look sharper or softer. Press ▲ or ▼ to adjust the sharpness from 0 to 100.
	Response Time	Select the response time: Normal, Fast, or Extreme.
	Reset Display	Select this option to restore default display settings.



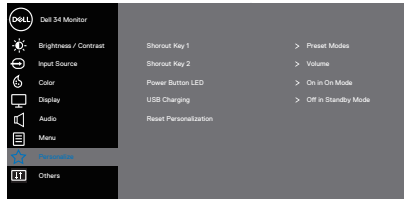
	<p>Audio</p>	<p>Change the audio settings.</p>  <p style="text-align: right;">     </p>
	<p>Volume</p>	<p>Press the buttons to adjust the volume. Minimum is '0' (-).Maximum is '100' (+).</p>
	<p>Speaker</p>	<p>Select this option to activate the speaker.</p>
	<p>Reset Audio</p>	<p>Select this option to restore default display settings.</p>
	<p>Menu</p>	<p>Select this option to adjust the settings of the OSD, such as, the languages of the OSD, the amount of time the menu remains on screen and so on.</p>  <p style="text-align: right;">     </p>
	<p>Language</p>	<p>Set the language option for the OSD display: (English, Spanish, French, German, Brazilian Portuguese, Russian, Simplified Chinese, or Japanese).</p>
	<p>Transparency</p>	<p>Press  or  to change the menu transparency (0 to 100).</p>
	<p>Timer</p>	<p>OSD hold time: sets the length of time the OSD will remain active after the last time you pressed a button.</p> <p>Press  or  to adjust the slider in 1 second increments, from 5 to 60 seconds.</p>
	<p>Lock</p>	<p>Controls user access to adjustments. User can select one of the following: Menu Buttons, Power Button, Menu + Power Buttons, Disable.</p>
	<p>Reset Menu</p>	<p>Reset all OSD settings to the factory preset values.</p>





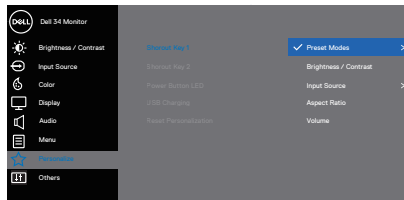
Personalize

Select this option to adjust the settings of the personalization.



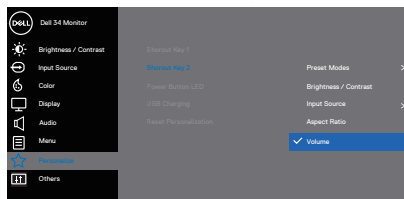
Shortcut Key 1

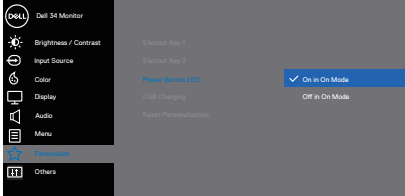
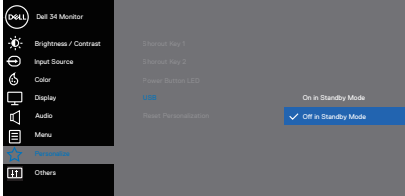
Select one of the following: Preset Modes, Brightness/Contrast, Input Source, Aspect Ratio, Volume to set the shortcut key 1.



Shortcut Key 2

Select one of the following: Preset Modes, Brightness/Contrast, Input Source, Aspect Ratio, Volume to set the shortcut key 2.



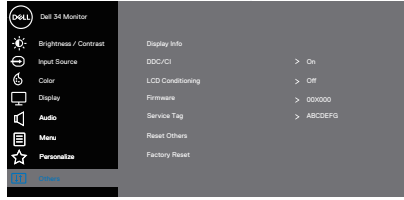
<p>Power Button LED</p>	<p>Set the power LED indicator On In On Mode or Off In On Mode to save energy.</p>  <p style="text-align: right;"> ⬆ ⬇ ⬇ ⬆ </p>
<p>USB</p>	<p>Enable or disable USB function in monitor standby mode.</p>  <p style="text-align: right;"> ⬆ ⬇ ⬇ ⬆ </p>
<p>Reset Personalization</p>	<p>Reset all settings under the personalize menu to the default setting.</p>





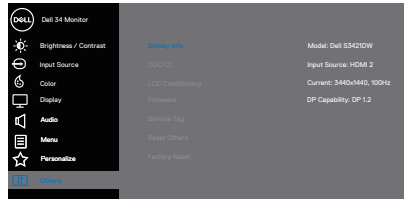
Others

Change the OSD settings, such as the DDC/CI, LCD conditioning, and so on.



Display Info

Display the monitor's current settings.

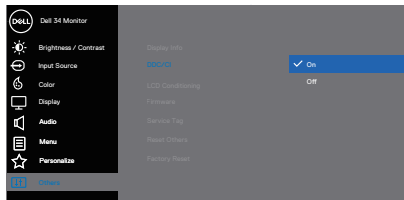


DDC/CI

DDC/CI (display data channel/command interface) allows your monitor parameters (brightness, color balance and etc.) to be adjustable via the software on your computer.

You can disable this feature by selecting off.


Enable this feature by selecting on for best user experience and optimum performance of your monitor.



LCD Conditioning

Helps reduce minor cases of image retention. Depending on the degree of image retention, the program may take some time to run. To start LCD conditioning, select on.



Firmware	Display the version of the firmware about the display.
Service Tag	<p>Display the service tag number of the display. The Service Tag is a unique alphanumeric identifier that allows Dell to identify the product specifications and access warranty information.</p> <p> NOTE: The Service Tag is also printed on a label located at the back of the cover.</p>
Reset Others	Reset all settings under the others setting menu to the factory preset values.
Factory Reset	Restore all preset values to the factory default settings.

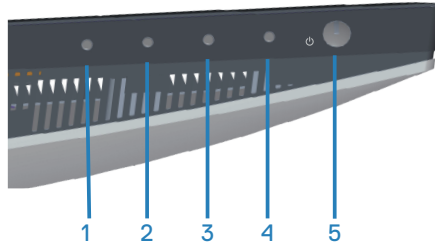
 **NOTE: Your monitor has a built-in feature to automatically calibrate the brightness to compensate for LED aging.**



Menu and Power button lock

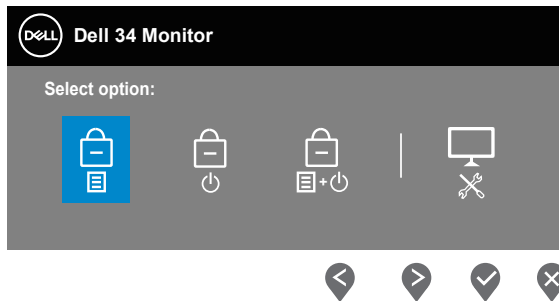
Prevents users to access or change OSD menu settings on the display.

By default, the Menu and Power button lock setting is disabled.



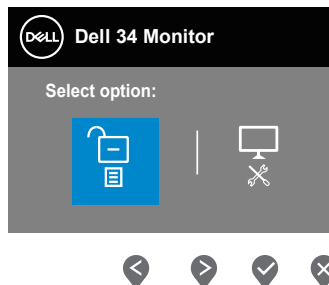
To access the lock menu, press and hold the **Exit** button (button 4) for four seconds. A lock menu appears at the bottom right corner of the display.

NOTE: The lock menu can be accessed using this method when the Menu and Power buttons are in unlocked state.







To access the unlock menu, press and hold the **Exit** button (button 4) for four seconds. An unlock menu appears at the bottom right corner of the display.

NOTE: The unlock menu can be accessed when the Menu and Power buttons are in locked state.



There are three lock options.


	Menu	Description
1	Menu Buttons 	When Menu Buttons is selected, the OSD menu settings cannot be changed. All buttons are locked except Power button.
2	Power Button 	When Power Button is selected, the display cannot be turned off using the Power button.
3	Menu + Power Buttons 	When Menu + Power Buttons is selected, the OSD menu settings cannot be changed and the Power button is locked.
4	Built-in Diagnostics 	See Built-in diagnostics for more information.

 **NOTE: To access the Lock or Unlock menu – Press and hold the Exit button (button 4) for four seconds.**

In the following scenarios, the  icon appears at the center of the display:

- When Up button (button 1), Down button (button 2), Menu button (button 3), or Exit button (button 4) are pressed. This indicates the OSD menu buttons are in lock state.
- When the Power button (button 5) is pressed. This indicates the Power button is in lock state.
- When any one of the five buttons are pressed. This indicates OSD menu buttons and the Power button is in lock state.

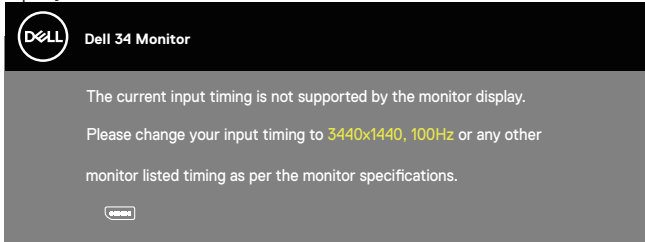
Unlocking the OSD menu and Power buttons:

1. Press and hold the Exit button (button 4) for four seconds. The unlock menu appears.
2. Select the unlock icon  to unlock the buttons on the display.



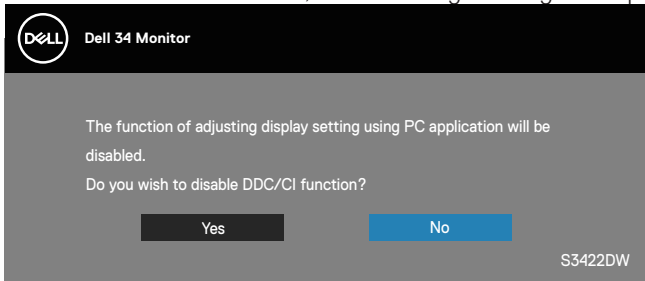
OSD warning messages

When the monitor does not support a particular resolution mode, the following message is displayed:

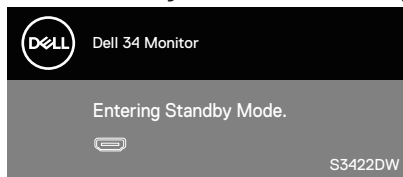


This means that the monitor cannot synchronize with the signal that it is receiving from the computer. See [Monitor specifications](#) for the Horizontal and Vertical frequency ranges addressable by this monitor. Recommended mode is 3440 x 1440.

Before the **DDC/CI** function is disabled, the following message is displayed:

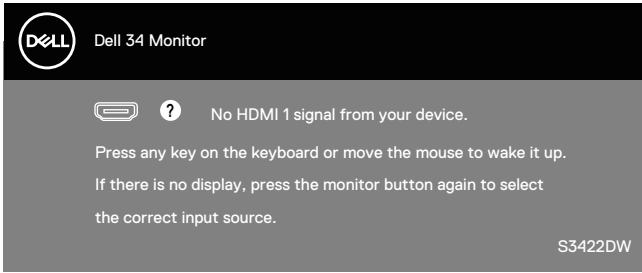


When the monitor enters the **Standby Mode**, the following message appears:

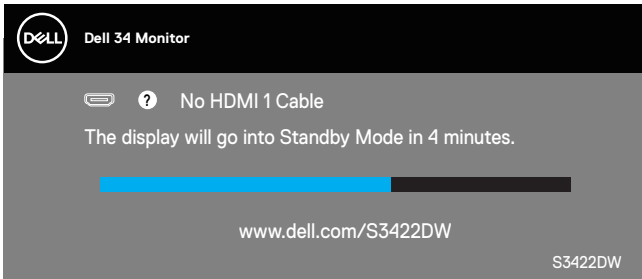


If you press any button other than the power button, the following messages will appear depending on the selected input:

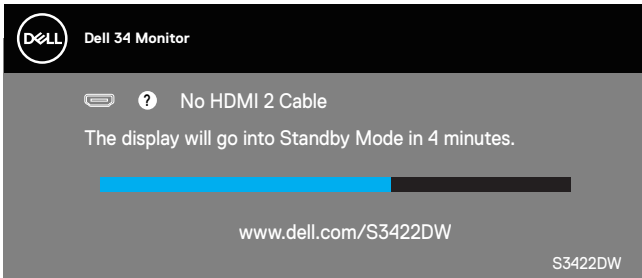




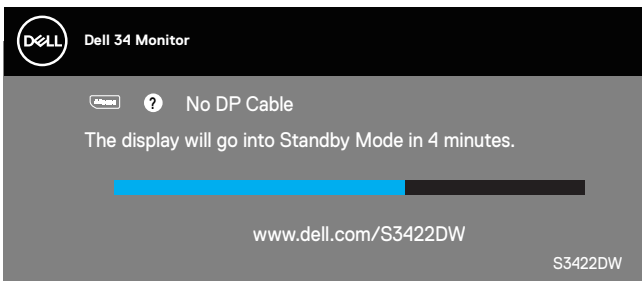
If an HDMI or DP cable is not connected, a floating dialog box as shown below appears. The monitor will enter Standby Mode after 4 minutes if left at this state.



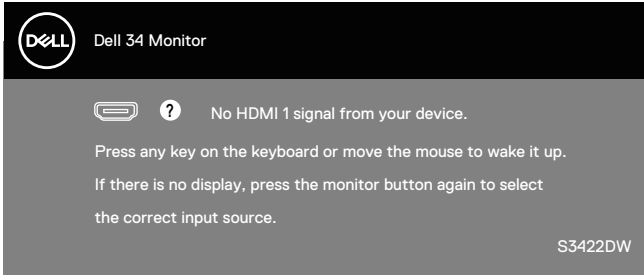
or



or



The OSD functions only in the normal operation mode. When any button is pressed in the Active-off mode, the following message will be displayed:



Activate the computer and the monitor to gain access to the OSD.
See [Troubleshooting](#) for more information.



Setting up your monitor

Setting the maximum resolution

To set the maximum resolution for the monitor:

In Windows 7, Windows 8, Windows 8.1 and Windows 10:

1. For Windows 8 and Windows 8.1 only, select the Desktop tile to switch to classic desktop.
2. Right-click on the desktop and click **Screen Resolution**.
3. Click the Dropdown list of the Screen Resolution and select **3440 x 1440**.
4. Click **OK**.

If you do not see **3440 x 1440** as an option, you may need to update your graphics driver. Depending on your computer, complete one of the following procedures:

If you have a Dell desktop or portable computer:

- Go to www.dell.com/support, enter your computer's Service Tag, and download the latest driver for your graphics card.

If you are using a non-Dell computer (portable or desktop):

- Go to the support site for your computer and download the latest graphic drivers.
- Go to your graphics card website and download the latest graphic drivers.

If you have a Dell desktop or a Dell portable computer with internet access

- Go to www.dell.com/support, enter your service tag, and download the latest driver for your graphics card.
5. After installing the drivers for your graphics adapter, attempt to set the resolution to **3440 x 1440** again.



NOTE: If you are unable to set the resolution to 3440 x 1440, please contact Dell to inquire about a graphics adapter that supports these resolutions.




If you have a non Dell desktop, portable computer, or graphics card

In Windows 7, Windows 8, Windows 8.1 and Windows 10:

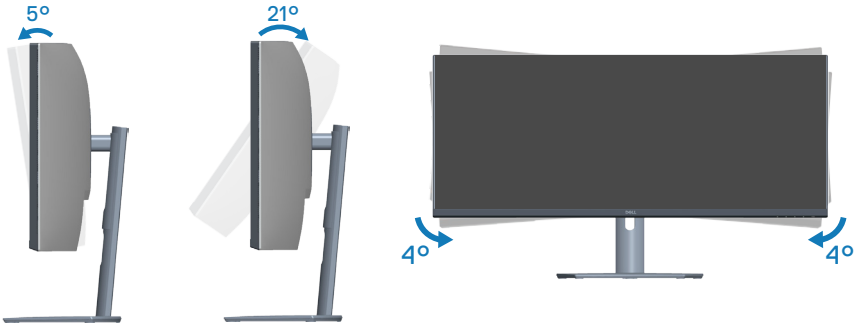
1. For Windows 8 and Windows 8.1 only, select the Desktop tile to switch to classic desktop.
2. Right-click on the desktop and click **Personalization**.
3. Click **Change Display Settings**.
4. Click **Advanced Settings**.
5. Identify your graphics controller supplier from the description at the top of the window (e.g. NVIDIA, ATI, Intel, and so on).
6. Refer to the graphic card provider website for updated driver (for example, www.ATI.com OR www.AMD.com).
7. After installing the drivers for your graphics adapter, attempt to set the resolution to **3440 x 1440** again.



Using the tilt and vertical extension

 **NOTE:** These values are applicable to the stand that was shipped with your monitor. To set up with any other stand, see the documentation that shipped with the stand.

Tilt Extension



 **NOTE:** The stand is detached when the monitor is shipped from the factory.

 **NOTE:** The slant angle of this monitor is between -4° and $+4^{\circ}$, not allowing for pivot movements.

Vertical Extension

 **NOTE:** The stand can be extended vertically up to 100 mm.



Troubleshooting

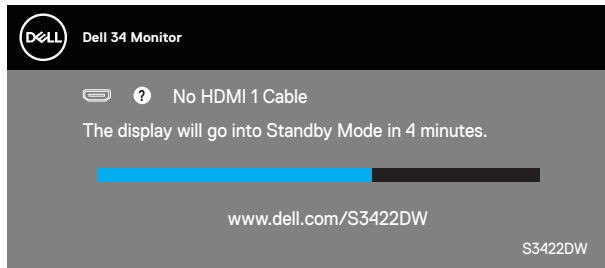
⚠ WARNING: Before you begin any of the procedures in this section, follow the [Safety Instructions](#).

Self-Test

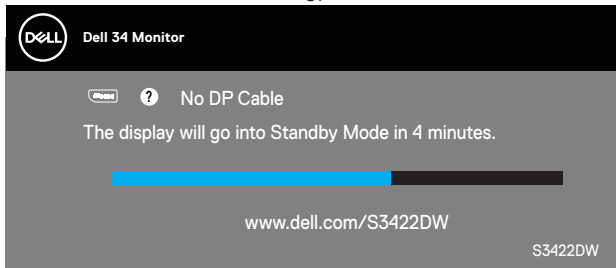
Your monitor provides a self-test feature that allows you to check if your monitor is functioning properly. If your monitor and computer are properly connected but the monitor screen remains dark, run the monitor self-test by performing the following steps:

1. Turn off both your computer and the monitor.
2. Disconnect all video cables from the monitor. This way, the computer doesn't have to be involved.
3. Turn on the monitor.

If the monitor is working correctly, it detects that there is no signal and one of the following message appears. While in self-test mode, the power LED remains white.



OR



✎ NOTE: This box also appears during normal system operation, if the video cable is disconnected or damaged.



4. Turn off your monitor and reconnect the video cable; then turn on your computer and the monitor.

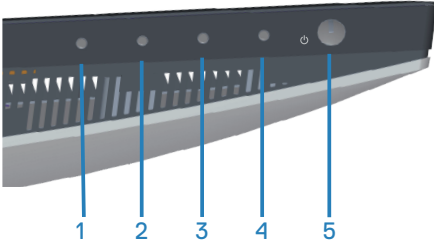
If your monitor remains dark after you reconnect the cables, check your video controller and computer.



Built-in diagnostics

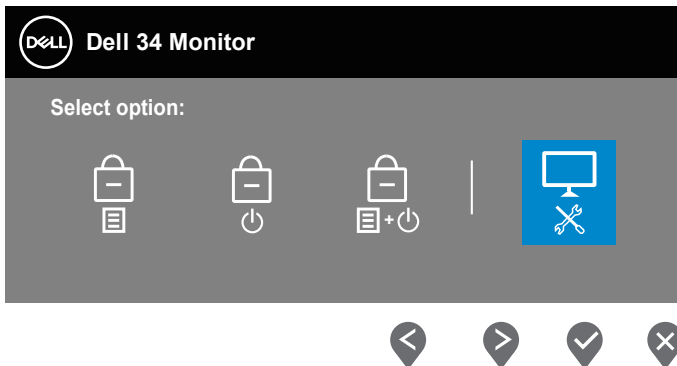
Your monitor has a built-in diagnostic tool that helps you determine if any screen abnormality you experience is an inherent problem with your monitor, or with your computer and video card.

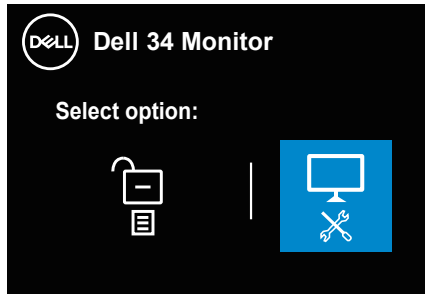
NOTE: You can run the built-in diagnostics only when the video cable is unplugged and the monitor is in self-test mode.




To run the built-in diagnostics:

1. Ensure that the screen is clean (no dust particles on the surface of the screen).
2. Unplug the video cable(s) from the back of the computer or monitor. The monitor then goes into the self-test mode.
3. Press and hold the Exit button (button 4) for four seconds to enter the OSD lock/unlock menu.





4. Select the  icon to run the built-in diagnostics.
5. Carefully inspect the screen for abnormalities.
6. Press the Up button (button 1) on the back cover again. The color of the screen changes to grey.
7. Inspect the display for any abnormalities.
8. Repeat step 6 and 7 to inspect the display in red, green, blue, black, white and text pattern screens.

The test is complete when the text pattern screen appears. To exit, press the Up button (button 1) again.

If you do not detect any screen abnormalities upon using the built-in diagnostic tool, the monitor is functioning properly. Check the video card and computer.



Common problems

The following table contains general information about common monitor problems you might encounter and the possible solutions:

Common Symptoms	Possible Solutions
No Video/Power LED off	<ul style="list-style-type: none"> ● Ensure that the video cable connecting the monitor and the computer is properly connected and secure. ● Verify that the power outlet is functioning properly using any other electrical equipment. ● Ensure that the power button is pressed. ● Ensure that the correct input source is selected via the Input Source menu.
No Video/Power LED on	<ul style="list-style-type: none"> ● Increase brightness and contrast controls using the OSD. ● Perform monitor self-test feature check. ● Check for bent or broken pins in the video cable connector. ● Run the built-in diagnostics. ● Ensure that the correct input source is selected via the Input Source menu.
Poor Focus	<ul style="list-style-type: none"> ● Eliminate video extension cables. ● Reset the monitor to Factory Settings (Factory Reset). ● Change the video resolution to the correct aspect ratio.
Shaky/Jittery Video	<ul style="list-style-type: none"> ● Reset the monitor to Factory Settings (Factory Reset). ● Check environmental factors. ● Relocate the monitor and test in another room.
Missing Pixels	<ul style="list-style-type: none"> ● Cycle power On-Off. ● Pixel that is permanently Off is a natural defect that can occur in LCD technology. ● For more information on Dell Monitor Quality and Pixel Policy, see Dell Support site at: www.dell.com/support/monitors.
Stuck-on Pixels	<ul style="list-style-type: none"> ● Cycle power On-Off. ● Pixel that is permanently off is a natural defect that can occur in LCD technology. ● For more information on Dell Monitor Quality and Pixel Policy, see Dell Support site at: www.dell.com/support/monitors



Brightness Problems	<ul style="list-style-type: none"> ● Reset the monitor to Factory Settings (Factory Reset). ● Adjust brightness & contrast controls via OSD.
Geometric Distortion	<ul style="list-style-type: none"> ● Reset the monitor to Factory Settings (Factory Reset). ● Adjust horizontal & vertical controls via OSD.
Horizontal/Vertical Lines	<ul style="list-style-type: none"> ● Reset the monitor to Factory Settings (Factory Reset). ● Perform monitor self-test feature check and determine if these lines are also in self-test mode. ● Check for bent or broken pins in the video cable connector. ● Run the built-in diagnostics.
Synchronization Problems	<ul style="list-style-type: none"> ● Reset the monitor to Factory Settings (Factory Reset). ● Perform monitor self-test feature check to determine if the scrambled screen appears in self-test mode. ● Check for bent or broken pins in the video cable connector. ● Restart the computer in the safe mode.
Safety Related Issues	<ul style="list-style-type: none"> ● Do not perform any troubleshooting steps. ● Contact Dell immediately.
Intermittent Problems	<ul style="list-style-type: none"> ● Ensure that the video cable connecting the monitor to the computer is connected properly and is secure. ● Reset the monitor to Factory Settings (Factory Reset). ● Perform monitor self-test feature check to determine if the intermittent problem occurs in self-test mode.
Missing Color	<ul style="list-style-type: none"> ● Perform monitor self-test feature check. ● Ensure that the video cable connecting the monitor to the computer is connected properly and is secure. ● Check for bent or broken pins in the video cable connector.
Wrong Color	<ul style="list-style-type: none"> ● Try different Preset Modes in Color settings OSD. Adjust R/G/B value in Custom Color in Color settings OSD. ● Change the Input Color Format to RGB or YCbCr in the Color settings OSD. ● Run the built-in diagnostics.



Image retention from a static image left on the monitor for a long period of time	<ul style="list-style-type: none">• Set the screen to turn off after a few minutes of screen idle time. These can be adjusted in Windows Power Options or Mac Energy Saver setting.• Alternatively, use a dynamically changing screensaver.
Video Ghosting or Overshooting	<ul style="list-style-type: none">• Change the Response Time in the Display OSD to Normal, Fast or Extreme depending on your application and usage.



Product-specific problems

Specific Symptoms	Possible Solutions
Screen image is too small	<ul style="list-style-type: none">• Check the Aspect Ratio setting in the Display settings OSD.• Reset the monitor to Factory Settings (Factory Reset).
Cannot adjust the monitor with the buttons on the bottom of the panel	<ul style="list-style-type: none">• Turn Off the monitor, unplug the power cord, plug it back, and then turn On the monitor.• Check if the OSD menu is locked. If yes, press and hold the menu button for 6 seconds to unlock.
No Input Signal when user controls are pressed	<ul style="list-style-type: none">• Check the signal source. Ensure the computer is not in standby or sleep mode by moving the mouse or pressing any key on the keyboard.• Check if the video cable is plugged in properly. Disconnect and reconnect the video cable if necessary.• Reset the computer or video player.
The picture does not fill the entire screen	<ul style="list-style-type: none">• Due to different video formats (aspect ratio) of DVDs, the monitor may display in full screen.• Run the built-in diagnostics.



Appendix

Safety Instructions

⚠ WARNING: Use of controls, adjustments, or procedures other than those specified in this documentation may result in exposure to shock, electrical hazards, and/or mechanical hazards.

For information on safety instructions, see the **Safety Environment and Regulatory Information (SERI)**.

FCC notices (U.S. Only) and other regulatory information

For FCC notices and other regulatory information, see the regulatory compliance website located at www.dell.com/regulatory_compliance

Please follow these safety instructions for best performance, and long life for your monitor:

1. The socket-outlet shall be installed near the equipment and shall be easily accessible.
2. The equipment can be installed on wall or ceiling mounting in horizontal position.
3. The monitor is equipped with a three-pronged grounded plug, a plug with a third (Grounding) pin.
4. Do not use this product near water.
5. Read these instructions carefully. Keep this document for future reference. Follow all warnings and instructions marked on product.
6. Excessive sound pressure from earphones and headphones can cause hearing loss. Adjustment of the equalizer to maximum increases the earphones and headphones output voltage and therefore the sound pressure level.



Contacting Dell

For customers in the United States, call 800-WWW-DELL (800-999-3355).

 **NOTE: If you do not have an active Internet connection, you can find contact information on your purchase invoice, packing slip, bill, or Dell product catalog.**

Dell provides several online and telephone-based support and service options. Availability varies by country and product, and some services may not be available in your area.

To get online Monitor support content:

1. Visit www.dell.com/support/monitors

To contact Dell for sales, technical support, or customer service issues:

1. Visit www.dell.com/support
2. Verify your country or region in the **Choose A Country/Region** drop-down menu at the bottom of the page.
3. Click **Contact Us** on the left side of the page.
4. Select the appropriate service or support link based on your need.
5. Choose the method of contacting Dell that is convenient for you.

EU product database for energy label and product information sheet

S3422DW: <https://eprel.ec.europa.eu/qr/428231>



Stability Hazard.

The product may fall, causing serious personal injury or death. To prevent injury, this product must be securely attached to the floor/wall in accordance with the installation instructions.

A product may fall, causing serious personal injury or death. Many injuries, particularly to children, can be avoided by taking simple precautions such as:

ALWAYS use cabinets or stands or installation methods recommended by the manufacturer of the product set.

ALWAYS use furniture that can safely support the product.

ALWAYS ensure the product is not overhanging the edge of the supporting furniture.

ALWAYS educate children about the dangers of climbing on furniture to reach the product or its controls.

ALWAYS route cords and cables connected to your product so they cannot be tripped over, pulled or grabbed.

NEVER place a product in an unstable location.

NEVER place the product on tall furniture (for example, cupboards or bookcases) without anchoring both the furniture and the product to a suitable support.

NEVER place the product on cloth or other materials that may be located between the product and supporting furniture.

NEVER place items that might tempt children to climb, such as toys and remote controls, on the top of the product or furniture on which the product is placed.

If the existing product is going to be retained and relocated, the same considerations as above should be applied.

