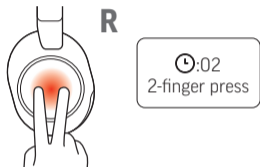


CUSTOMIZE YOUR HEADSET

Configure custom button in Poly Lens App. Choose from ANC/Transparency mode (default), Check device status and more.



DOWNLOAD APP

Download Poly Lens App to get the most out of your headset.

- Configure custom button feature
- Change settings
- Update devices
- View user guide

WEAR HEADSET

Microphones are on the front of your earcups. For best call audio, ensure your headset is worn correctly.



↓ poly.com/lens

Poly Lens Mobile App
Poly Lens Desktop App

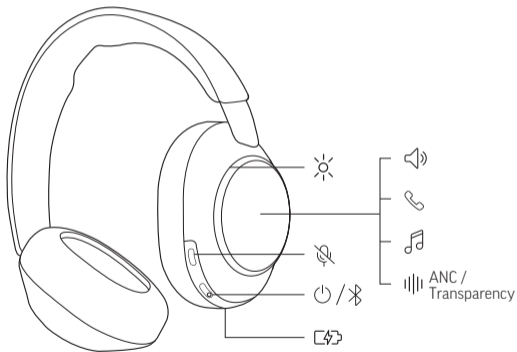
©2023 Poly. Bluetooth is a registered trademark of Bluetooth SIG, Inc.
All trademarks are the property of their respective owners.
RMN (모델명/型号/型號): VS80T, BT700, BT700C
211720-10 06.23



Recyclable where facilities exist

poly **QUICK START**

VOYAGER SURROUND 80 UC



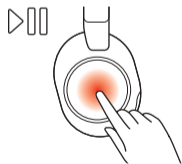
Located in case.
BT700 adapter
design varies.

TOUCH CONTROLS ON RIGHT

Tap/Press

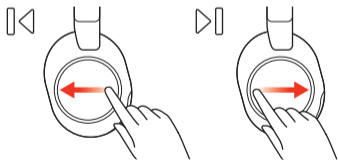
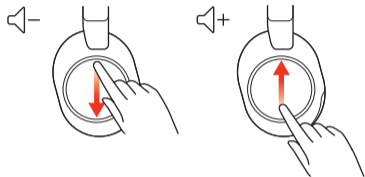


- Tap to answer
- Press to end



- Tap to play/pause

Swipe



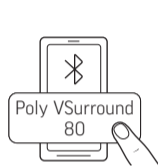
 poly.com/support

PAIR TO MOBILE PHONE

1.



2.

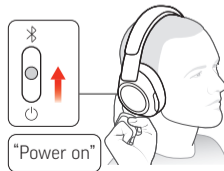


3.

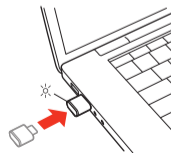


CONNECT TO COMPUTER

1.



2.



3.

